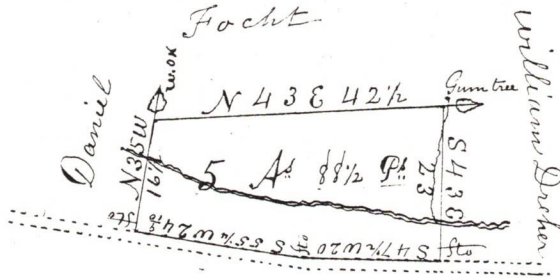


**OUR GOVERNMENT**



*William Dresher*

*Situated in Wayne Township Schuyl  
 kill County Pa Containing Five Acres  
 and Eighty eight and a half perches neat  
 measure being a tract of land William  
 Dreher & Wife sold to Penrose A Loyd  
 Surveyed and draughted by request of  
 William Dreher March 26<sup>th</sup> 1874  
 By J. H. Butz*

**ELECTED OFFICIALS OF WAYNE TOWNSHIP 1976**

**BOARD OF SUPERVISORS**

Kenneth F. Potts ..... Chairman  
 Lyle H. Laubentine ..... Vice Chairman  
 Miles M. Minnich ..... Member

**BOARD OF AUDITORS**

Kenneth Kreager ..... Chairman  
 Bruce Coller ..... Secretary  
 Wilson Rhine, Jr. .... Member

**TAX COLLECTOR** ..... Russell H. Fidler  
**ASSESSOR** ..... Earle Otto  
**CONSTABLE** ..... David Gates

**SCHOOL DIRECTORS**

(Blue Mt. School District)

Earl Moyer  
 John Lippert

## CHANGING TIMES

### *Population*

It is evident that the little township of Wayne has played an important part in the development of Sch. Co.. The earliest census figures available was in 1830 their was a population of 1,436; followed by 1840; 1,619; in 1850, 1,968; in 1860, after a portion had been set off to Washington Twp., 1,415; in 1870, 1,546 and in 1880, 1,630. The 1975 enumeration was 2,754.

### POPULATION TRENDS 1850 to 1970

Year	United States		Pennsylvania		Schuylkill County		Wayne Township	
	Population Total	% Change	Population Total	% Change	Population Total	% Change	Population Total	% Change
1850	23,191,876		2,311,786		60,713		1,968	see note
1860	31,443,321	35.6	2,906,215	25.7	89,510	47.4	1,415	
1870	38,558,371	22.6	3,521,951	21.2	116,428	30.1	1,546	9.0
1880	50,155,783	30.1	4,282,891	21.6	129,974	11.6	1,630	6.0
1890	62,947,714	25.5	5,258,113	22.8	154,163	18.6	1,641	0.6
1890	62,947,714	20.7	5,258,113	19.9	154,163	12.2	1,641	0.6
1900	75,994,575	21.0	6,302,115	21.6	172,927	20.2	1,650	-3.0
1910	91,972,266	14.9	7,665,111	13.8	207,894	4.7	1,601	-2.0
1920	105,710,620	16.1	8,720,017	10.5	217,754	8.2	1,582	-1.0
1930	122,775,046	7.2	9,631,350	2.8	235,505	-3.0	1,565	-2.0
1940	131,669,275	14.5	9,900,180	6.0	228,331	-12.2	1,531	2.0
1950	150,697,361	18.4	10,498,012	7.8	200,377	-13.7	1,568	10.0
1960	178,464,236		11,319,366		173,027		1,729	19.4
1970	203,235,298		11,793,909		160,089		2,065	

Note 1: Decrease in population in 1850s due to division of township into Washington & Wayne townships.

## POPULATION CHANGES IN WAYNE TOWNSHIP & ADJACENT MUNICIPALITIES

### 1940 to 1970

MUNICIPALITY	1940	% Change	1950	% Change	1960	% Change	1970
Wayne +	1,539		2,156	40.7	10,172	365.2	19,206
No. Manheim +	2,795	-16	2,336	-16.4	21,282	808.2	17,331
So. Manheim +	648	-1	641	-1.1	1,650	156.0	18,771
Orwigsburg	2,182	6	2,309	5.8	8,213	279.8	25,266
Landingville	255	-10	230	-9.8	322	28.2	175
Schuylkill Haven	6,518	1	6,597	1.2	6,470	-1.9	6,125
Cressona	1,695	4	1,758	3.7	1,854	5.6	1,814
Auburn	978	2	994	1.6	936	-4.2	895
Deer Lake	65	168	174	166.2	334	92.0	4,347
Pine Grove					2,267		3,219
Washington +					1,292		16,149

+ indicates Township  
all others are boroughs

### *Macadam Roads*

The oldest public roads; in the township are Route 443, Route 83 (in 1930 this road was relocated & rebuilt and is now known as Route 183) and the Panther Valley Road. There are now a total of 51.9 miles of roads owned and maintained by the supervisors, from this total 22 miles are improved roads. Within the township there are 26.8 miles of state owned highways.



Wayne Township, Feb. 15 1888

**RECEIVED OF**

*William Ziegler*  
the following Taxes for the Year 1887.

County tax. \$ 3.60

Refunded Debt " .60

~~State "~~

School "

3 00

5 per cent

7.20

*Jonathan Bressler Call*

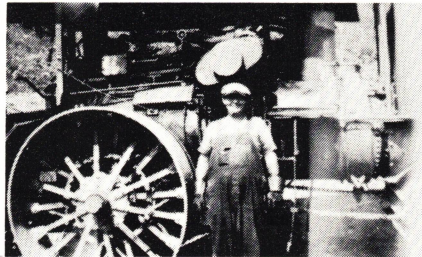


CONSTRUCTION OF 183



OLD 83

Road Roller with John D. Zimmerman  
when 83 was built. (1930)



*Personal and Property Taxes*

The total amounts of taxes assessed for 1975 were; Real Estate - \$46,306.62, School Tax - \$303, 599.72, Per Capita - \$9,450.00, School Tax Per Capita - \$37,492.50.

*Voting locations*

The township is divided into two districts, known as North and South Wayne. The residents of the North district vote at the Friedensburg Fire Co., the South district votes at the Summit Station Fire Co..



## WAYNE TOWNSHIP PLANNING COMMISSION

On January 1, 1969, Act No. 247 of the General Assembly of the Commonwealth of Pennsylvania became effective, authorizing the various municipalities in the state to establish Planning and Zoning Commissions.

By municipal ordinance on May 6, 1971, the Supervisors of the township authorized that such a Commission be established for Wayne Township.

The members appointed to the Commission in May, 1971, were; Carl L. Schneider, chairman; Ralph Heffner, vice-chairman; Harold Wildermuth, secretary; Paul Meyer, treasurer, Ivan Manbeck, Harold Reed, Kenneth Heinbaugh, Lyle Laubenstein, and Frank Sweitzer were the voting members.

A special research planning committee consisting of Donald Ziegler, Donald Zimmerman, and Russell Fidler was appointed.

Under the authority of the Legislative Act, the Planning Commission was authorized to: prepare a Comprehensive Plan for the development of the township, to prepare an official map, to prepare a zoning ordinance as well as subdivision and land development regulations and a capital improvement program.

Since its inception in 1971, the Commission has worked on many of the programs authorized by the Act. It has prepared and submitted to the Township Supervisors a Street and Road Map with recommendations on naming the various roads. The recommendation was accepted and today the street name signs are in place.

A subdivision regulation was researched, prepared, and recommended to the Township Supervisors. It has been accepted and an ordinance implementing it is in effect.

A capital improvement program in the area of a new municipal and/or equipment storage building, in lieu of remodeling the present building, has been proposed and is under consideration by the Supervisors.

An ordinance for the regulation of mobile home parks has been researched, prepared, and submitted to the Supervisors. It has been adopted and is in effect.

Several public meetings have been sponsored by the Commission, at which time recommendations and guidance have been solicited from the residents of the township concerning their preferences as to the type of land use and growth or the control of these areas. These recommendations have been used in the sections of the Comprehensive Plan that the Commission has completed to date. It is anticipated that the plan along with the recommendations and suggestions received from the State Soil Conservation Service, the Department of Forests and Waters, and the Department of Environmental Resources will be submitted to the Township Supervisors in 1976 for incorporation into a new and current Comprehensive Plan for Wayne Township. With the guidance of this plan, it is hoped that we can keep our township "clean and green" for future generations.

At the request of the Township Supervisors, the Commission has also participated in the township sanitary sewage feasibility study, road abandonment plans, and the control of unauthorized scrap yards and other eye-sore areas.

Long range projections for Commission studies include the feasibility of establishing a zoning commission, a township police force, beautification committee, and any other items that may benefit the public welfare.

Members of the Commission in 1976 are: Carl L. Schneider, chairman; Ralph Heffner, vice-chairman; Kenneth Potts, Sr., secretary; Paul Moyer, Treasurer; Lyle Laubenstein, Kenneth Heinbaugh, Donald Ziegler, Louis Ankenbrant, and Russell Fidler, members.



## HISTORY OF THE FRIEDENSBURG FIRE CO.

On May 22, 1959 thirty-three citizens of Wayne Township met in the new Wayne Township Elementary School building for the purpose of organizing an association for the betterment of the community. The name selected was the "Wayne Township Civic Group". The officers nominated and elected were:

Gordon D. Reed	.....	President
Stanley Schwartz	.....	Vice-President
Joan Reed	.....	Secretary
Richard Fehr, Sr.	.....	Treasurer

The first project undertaken was the elimination of toll service charges on all telephone calls made from Wayne Township to Pottsville. The Lycoming Telephone Co. of Pine Grove operated the local phone service and the Bell Telephone Co. of Pottsville was the other company involved. After the officers contacted the I. C. C. at Harrisburg it was learned that it would be necessary to have 90% or more of the telephone subscribers sign a request for the toll elimination. Cards were mailed and at a meeting on Nov. 5, 1959 it was found that only 197 cards had been returned. The required amount was 255. On April 12, 1960 it was learned that 94% of the subscribers had returned